

# WINE MASTER

le temps d'être différent

## A WINE CELLAR THE WAY YOU PICTURE IT

Regardless of what your style is, the ARM 15 can be discreetly incorporated into your wine cabinet. It then becomes a key element of your interior. A cutting-edge technique that will meet all of your wine cellar air conditioner expectations.

WINE CELLAR AIR CONDITIONER



15m<sup>3</sup>

Air-conditioning up to 15m<sup>3</sup>



High performance integrated thermostat



Quiet



Respectful of the environment



Ideal climate conditions for the preservation of your wine

\* The insulation quality and thickness has to be in accordance with the volume of the cellar. Glass and thermal losses through out the room as well using the wrong type of insulation will limit the achievable temperature.

# WINE ARM 15

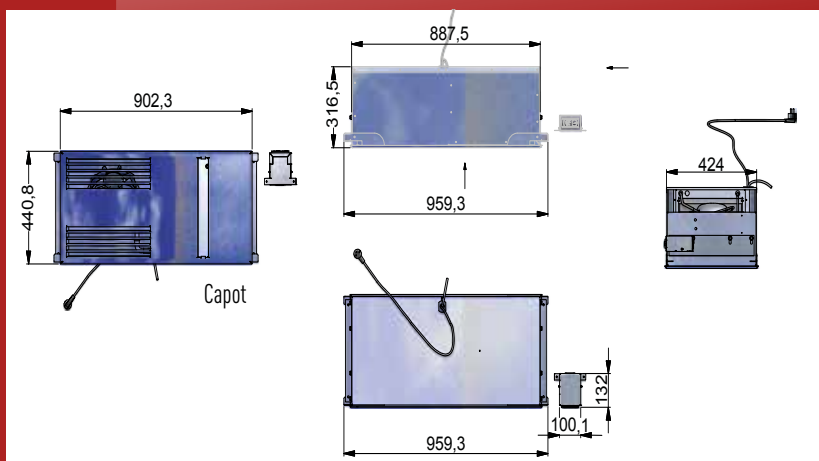
THE BUILT-IN



# WINE ARM 15

THE WINE CELLAR THE WAY YOU PICTURE IT  
WITH ALL THE WINEMASTER® BENEFITS

- Keeps cellars at a constant temperature of between 14 and 18°C\*
- Silent system (36 db) for great acoustic comfort
- Lots of savings due to low energy consumption
- A robust product that is designed to last
- Optional ventilation grid and insulation
- Condensate evaporation (condensation water)
- Wired electronic thermostat regulation
- 2 year guarantee



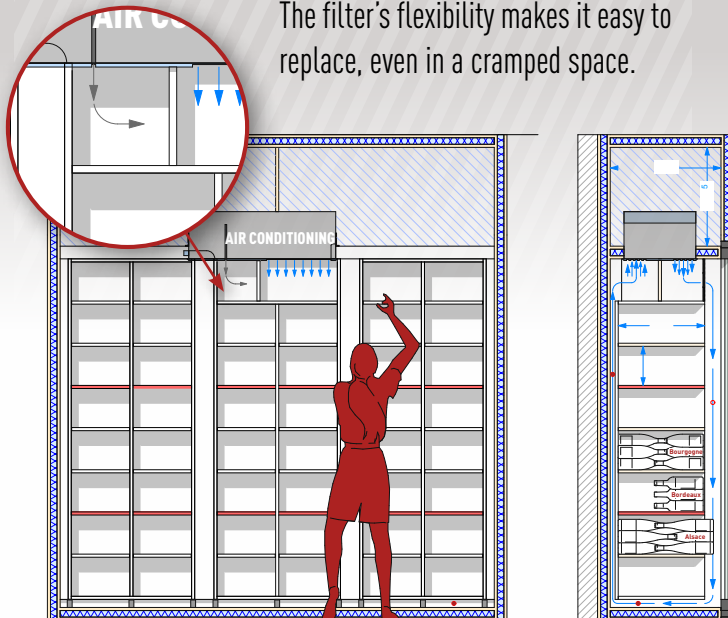


## SIMPLE MAINTENANCE, INCREASED LONG-LASTINGNESS

Air conditioner maintenance is an important aspect. The ARM 15 is thus designed to make the dust filter easy to clean out. You can access it directly inside the cabinet, and the filter can be removed without using any special tools.



The filter's flexibility makes it easy to replace, even in a cramped space.



Installation example

| REFERENCE                      | WINE ARM 15   |
|--------------------------------|---|
| Electrical supply              | 235 V - 50Hz<br>+ 3 m of cable                          |
| Air conditioning capacity*     | Up to 15 m <sup>3</sup> *                               |
| Dimensions H x W x D           | 317 x 885 x 424 mm                                      |
| Cooling capacity               | 500 W at 15°C   |
| Weight                         | 31 Kg   |
| Sound level outside the cellar | 36 dB   |
| Electrical power absorbed      | 400 W   |
| Temperature regulation*        | Preset to 15 °C<br>adju-s-table between<br>8 and 25 °C* |
| Coolant                        | R449 A  |
| Maximum outside temperature**  | 35°C  |

\* With correct insulation type and thickness matched to the volume of the cellar.

\*\* The ARM15 is designed to vent into adjacent rooms or spaces within the house that will never reach 35 degrees C or higher.

## EASY TO INSTALL

The WINE ARM 15 air conditioner is set up in such a way as to feed through the top of the wine cabinet.





# A STORY OF LOVE AND TERROIR...

It is in the foothills of the Alsatian vineyards, where the wine route starts, that the WineMaster® story begins. Our attachment to terroir and our love of wine have always been the source of our thought process and creativity.

Ever since its inception in 1984, the skills and know-how of the men and women of WineMaster® have been at the heart of every step in the air conditioner making process.

Quality and detail are what motivate us, and we are proud of our products and their 100 % Alsatian design.

“ INNOVATION AND EXCELLENCE ARE  
WINEMASTER'S KEY VALUES. ”



WINE MEDIA Text and photo are not contractual

**WINEMASTER**  
le temps d'être différent

Z.I. VIEUX-THANN ■ 18 RUE GUY DE PLACE  
BP 60010 ■ F68801 THANN CEDEX  
Tél : +33 (0) 389 377 515 ■ E-mail : [contact@winemaster.fr](mailto:contact@winemaster.fr)  
[www.winemaster.fr](http://www.winemaster.fr)